

MAGNETIC TYPE LEVEL GAUGES

To replacement cloudy, breakable sight glasses of

Magnetic Type Level Gauge

It is possible to measure the level of viscous, aggressive, combustible, dangerous, toxic, hot, compressed, agitated and contaminated liquid with high precision and operas ability,

Because:

Highest operational safety- Through separation of liquid and indicator display, liquid is contained inside a pressure-tight housing, no worries about leak from widow or gland parts, which are liable to occur of glass gauge.

Perfect readability-Brilliantly color flags are easy to recognize, ever at long distances and over decades of use.

Indicator and control in one-through installation of magnetic switches for level alarm or pump control and/or level transmitter to remote display device.

Durability- 304SS, 316/316LSS, PP, PVDF, Hastelloy, Titanium or any non-magnetic material.

Wide useful-in 10mm stages, full line-up covering up to 400°C temperature and operation pressure from vacuum to 400bar.

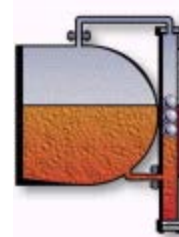
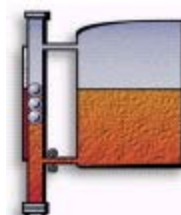
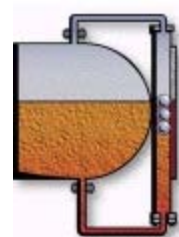
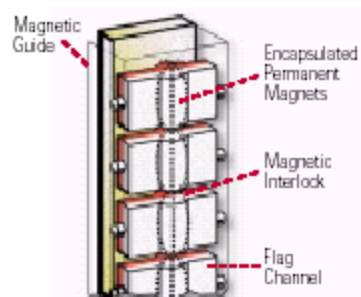
Easily install-Except magnet float, all of indicating and control device is mounting outside of chamber, easy to installation or replacement.

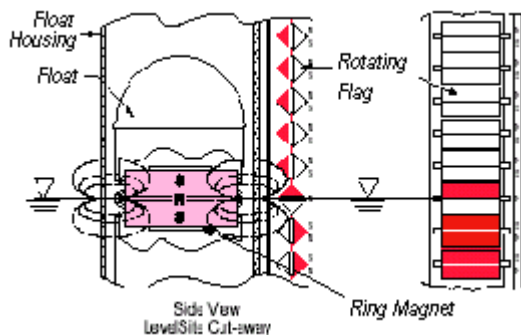
Efficient-Continuous level indication no outside energy source required.

No recalibration required- Since Floats and indication elements react in "forced" dependency relative to fluid surface levels.

Ring Magnet- The special permanent design provide a 360 degree magnetic flux fluid.

Electronic Control- Attach optional point level switches and/or continuous level transmitter to extend capabilities beyond those of a simple sight glass.





Advantages at a glance

- *Applicable for level measurement in open or closed tank
- *Applicable for level measurement and supervision of liquids and liquefied gases
- *Applicable in all ranges of industry owing to corrosion-resistant materials
- *Applicable under extreme operating conditions
- *Simple sturdy, secure against fracture and non-service structure
- *Good reading of level even from far distance
- *360° mounting position
- *Pressure and gastight separation between measuring and indication part

Model Selection Guidance

Basic model-chamber material-Float material-Mounting Type-C to C length(mm)-Conn. size

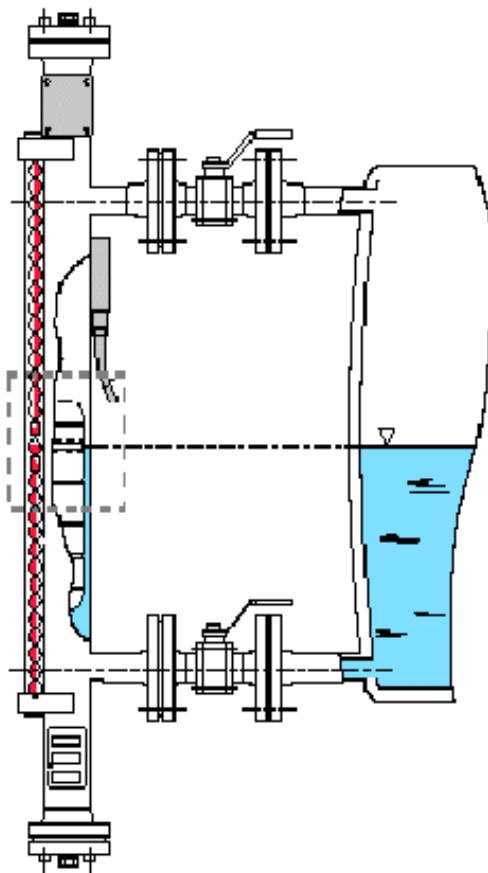
Chamber & float material type code			
Code	Material	Code	Material
S1	304SS	P4	FRP
S2	316SS	P5	PTFE coating
P1	CPVC	H1	Hastelloy C
P2	P.P.	T1	Titanium
P3	PVDF	N1	Inconel

Mounting Type	
Code	Type
TB	Top-Bottom configuration
SS	Side-side configuration
TS	Top-side configuration
SB	Side-bottom configuration

Example: FG10-S1-S2-SS-1200-1"/150#RF

Please advise us, without fail in any case, of the following 4 items when you place order or make inquiry of either standard or non-standard gauge.

1. Operation pressure
2. Operation temperature
3. Specific gravity of liquid
4. Medium



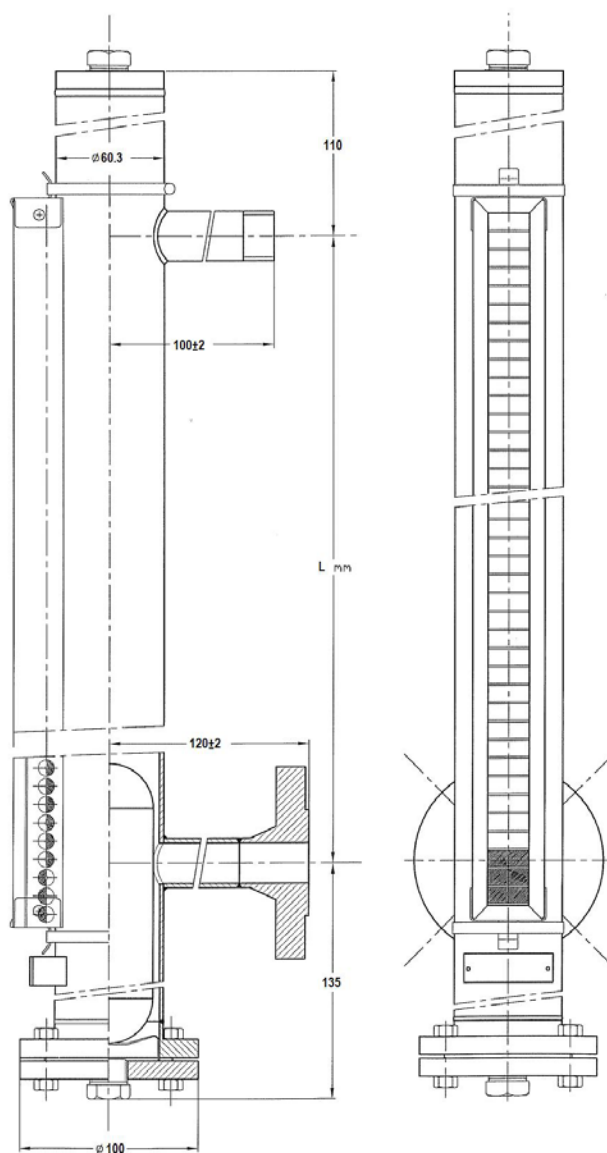
Fantech Instrumentation

Type FG Standard designs Metallic Versions Standard

Chamber	Material: St. St 316/316L, 304/304L ϕ 50.8mm welded. Seamless
Top	Welded caps Dual flange end+ plug $\frac{1}{2}$ "NPT
Bottom	Dual flange "Brooks type D100 Drain + plug $\frac{1}{2}$ "NPT
Connection	Side-Side $\frac{3}{4}$ " ANSI 150# RF Side-Side 2" ANSI 150# RF Side-Side 2" ANSI 300# RF Flange, Coupling, Socket Weld, Thread
C -to- C dimension	Minimum 250mm Maximum 5500mm Longer dimensions on request
Floats	St. St. 316L See floats specification Pages
Reading system	ABS flags red or fluorescent white/ black Aluminum red/White 316SS red/natural
Alarm switch	See specification pages
Transmitter	See specification pages
Reading scale	St.St.316 or aluminum printed

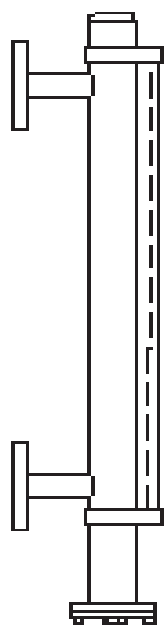
Process conditions

Temperature	From -40 °C to +400 °C
Pressure	From -1 atm to 20 bar
Sp. Gravity	From 0.4 g/cm ³ Interface on request

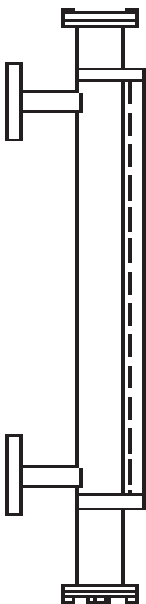


Standard series FG

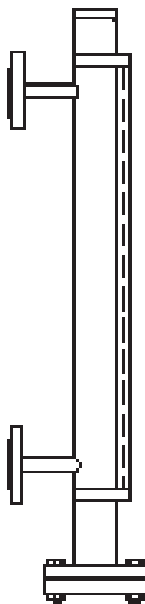
FG series is a compact designed and economical magnetic level gauge suitable for general applications. All parts coming in contact with the medium are made of 304SS,316SS or other rugged material. Indication Up to 6 meters in length are delivered in one piece. Depending on the temperature/pressure ratios, floats are utilized for pressure compensation, density Classes>0.45 g/cm3



FG10



FG20



FG40

Physical Specifications

Housing & float material		316SS,304SS
Overall length		6000mm
Connection		ANSI,JIS or DIN
Rated pressure	FG-10	PN10
	FG-20	PN20
	FG-40	PN40
Media temperature		150/250/400°C
Density, g/cm3		>0.4
Vent & Drain		Vent: ½”NPT Plug
		Drain: ½”NPT 316SS Gate valve